

Elegance
Royale [👑] 55



Luxury Vinyl Tile Plank and Herringbone Collection

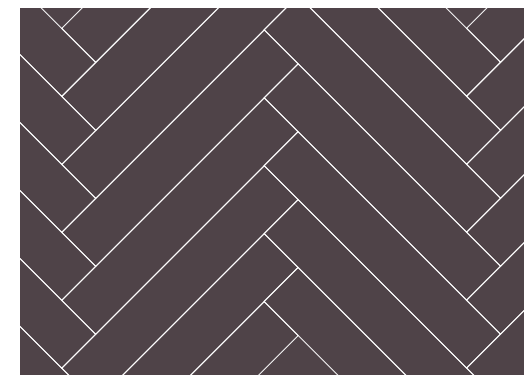


Elegance Röyale ⁵⁵

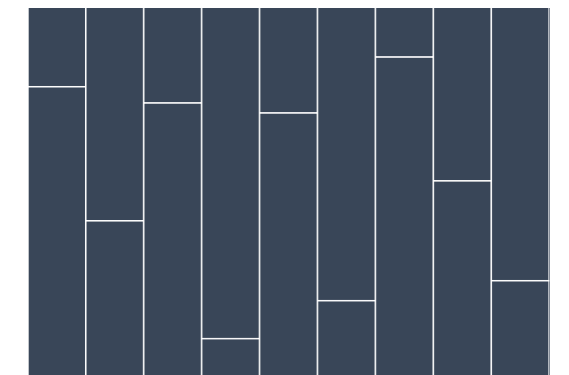
Each Elegance Royale Plank has been skilfully created using a new super matt technology (Gra-Matt™Ultra) that makes the floor visually closer to natural wood, unlike many other glossy LVT products. Each design accurately mimics the texture of natural timber while incorporating multi-tonal variance to give your herringbone floor realistic character and depth.

All designs are available in herringbone and full planks

Herringbone



Plank



*Commercially engineered
designed for everyone*

Elegance Royale⁵⁵ Collection

Product merchandise

In addition to our A4 shade card and large presenters we also offer a bespoke production service for showroom stands. Full size planks are also available on request.

Please contact your supplier for further information

Herringbone plank size 102.25 x 613.5mm
Full plank size 187 x 1227mm

4 Micro Bevel



Crömwell Oak

Product code: LIBE0032



*Beautifully subdued
with natural brown hues*

Herringbone size 613.5 x 102.25



Crömwel Oak

Product code: LIBE0052

*Beautifully subdued
with natural brown hues*



Plank size: 187 x 1227mm





Empire Oak

Product code: LIBE0037



Herringbone size 613.5 x 102.25



*Welcoming warm tone
with a unique greige pallet.*

Empire Oak

Product code: LIBE0057

*Welcoming warm tone
with a unique greige pallet.*



Plank size: 187 x 1227mm





An opulent and elegant oak that accentuates its inherent beauty and texture.



Herringbone size 613.5 x 102.25



Elizabethan Oak

Products code: LIBE0051

An opulent and elegant oak that accentuates its inherent beauty and texture.



Plank size: 187 x 1227mm





Kingship Oak

Product code: LIBE0034



*A natural oak grain
with hints of soft taupe
& subtle streaks of a
darker grey-brown accents*

Herringbone size 613.5 x 102.25

Kingship Oak



A natural oak grain with hints of soft taupe & subtle streaks of a darker grey-brown accents

Product code: LIBE0054



Plank size: 187 x 1227mm

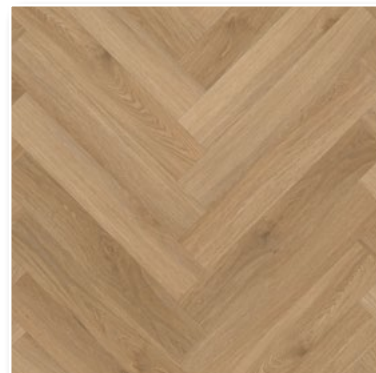


Lancaster Oak

Product code: LIBE0033



Warm and inviting and embodies the natural beauty of oak wood



Herringbone size 613.5 x 102.25



Lancaster Oak

Product code: LIBE0053

*Warm and inviting
and embodies the natural
beauty of oak wood*



Plank size: 187 x 1227mm



Saxön Oak 

Product code: LIBE0035



Saxon Oak 

Product code: LIBE0055

*Muted and natural, resembling
a driftwood pallet with shades
of grey and hints of beige*



Plank size: 187 x 1227mm





Sovereign Oak

Product code: LIBE0036



Blending soft greys with hints of subtle beige tones giving it a neutral, contemporary look.



Herringbone size 613.5 x 102.25

Sovereign Oak

Product code: LIBE0056

*Blending soft greys
with hints of subtle beige
tones giving it a neutral,
contemporary look.*

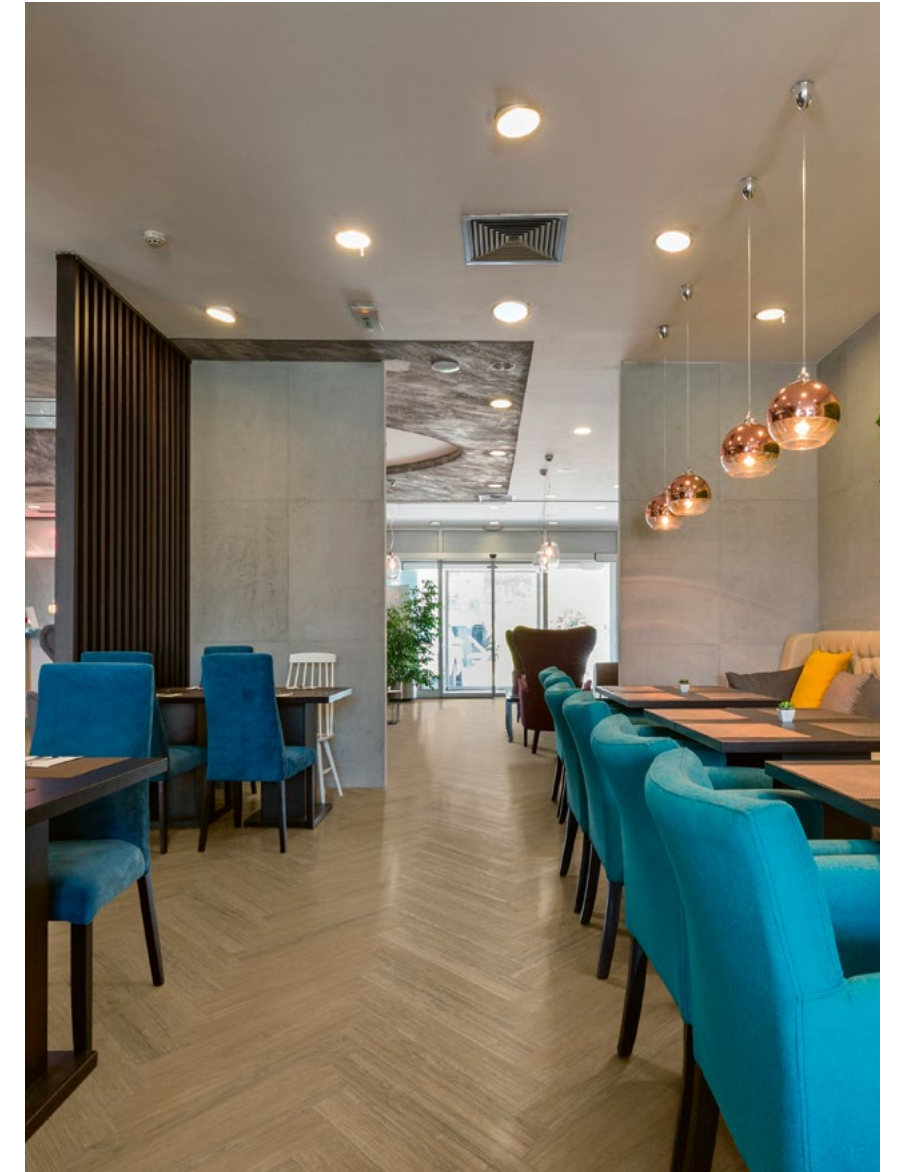


Plank size: 187 x 1227mm



Tudör Oak

Product code: LIBE0030



Golden-brown tones with natural wood grain creates a warm and inviting ambience reminiscent of traditional oak floors.



Herringbone size 613.5 x 102.25

Tudor Oak

Product code: LIBE0050

Golden-brown tones with natural wood grain creates a warm and inviting ambience reminiscent of traditional oak floors.



Plank size: 187 x 1227mm



Keep your floor looking beautiful

The Elegance Royale collection is designed to withstand the demands of their intended environment with their built in resilient wear layer and PU surface treatment. We do however recommend the following floor care products. All floorcare products are available at a discounted rate when purchased with any Elegance Royale LVT product.



Dr.Schutz Floorcare Kit

Optimal care set with everything needed to keep your floor in immaculate condition, even in the most demanding areas such as hallways, bathrooms & kitchens. Enhances the floors anti-slip properties with a natural matt care film that does not alter the appearance of your floor, with a special cleaner to maintain and ensure long-life of your floors for many years to come.

Best selling scratch removal kit for repairing damage to Vinyl, Luxury Vinyl Tile (LVT) and other Design flooring.

Includes PU Repair Spray for fine scratches, PU Repair Pen for mending deep scratches, as well as a range of accessories with instructions for use.

Not Included in the Dr.Schutz Floorcare Kit*



ScratchFix Repair Set



Floor Cleaner R1000

Cleans, protects and adds safety to your flooring in one step. Enhances the anti-slip properties, creating a water-soluble protective film which fulfils DIN Norm 18031 for sport floors and is ideal for use after application of hard sealers or polishes such as Floor Shine or Floor Mat.



Floor Mat

Ideal for maintaining LVT and other vinyl floors at home. Protects with a natural matt care film that does not alter the floor's appearance. Reduces resoiling and makes day-to-day cleaning easier.



Clean & Strip

A super efficient, yet mild special cleaning agent to remove the remains of old care products, scuff marks and stubborn stains as well as adhesive residue on newly installed or heavily soiled vinyl, lino, rubber and resin floors.



Kingship Oak

Floorcare

We want your new Elegance Royale floor to continue to look as good as the first day it was installed, so to help you achieve this we have laid out the following floorcare guidelines. Each product in the this collection features a polyurethane (PU) treatment within a hard-wearing surface providing protection against everyday wear, ensuring optimum long-term performance of your floor. Furthermore, our Elegance Royale collection does not harbour dust mites or bacteria making it ideal for the home environment.

Floorcare instructions for domestic interiors:



Initial cleaning after installation. Avoid walking on the floor for at least 24 hours following completion of installation. Sweep or vacuum to prevent loose dirt or grit from scratching the floor. Polishing your floor can be beneficial to help prevent slight surface scratches and to provide further protection.



Day to day cleaning Sweep or vacuum the floor to remove loose dirt, grit or dust. Regularly mop the floor evenly using clean mops and neutral cleaning solutions, diluted to the manufacturer's instructions. Collect any excess liquid in a mop bucket. Rinse the floor with clean water and allow to dry.

Regular cleaning is more beneficial to the floor covering and is more cost effective than occasional heavy cleaning.



Install barrier mats at entrances to pick up grit and moisture. (Note, some rubber-backed mats may discolour the floor). Insert protective pads and cups under furniture to protect your floor from indentations and scratches. Remove spillages as quickly as possible to reduce risk of staining and causing slip hazards. Regularly trim pets claws as these can cause fine scratches.



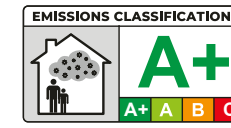
Do not use abrasive liquids or metal scouring pads as these can damage the floor. Avoid cleaning the floor with solvents, caustic detergents, washing up liquids, soap powders, bleach, furniture polishes, petroleum based products, pine gels, stain removers or highly coloured products. Such products may make the floor slippery or cause permanent damage. Avoid dragging furniture with unprotected feet across the floor. Regularly trim pets claws as these can cause fine scratches.

For commercial floorcare instructions, contact your supplier for more details.

Guarantee



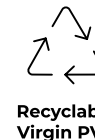
CLASS 23 TO 32



EMISSIONS CLASSIFICATION*
A+
A+ A B C



Phthalate Free PVC



Recyclable Virgin PVC



floor score



5 YEARS WARRANTY COMMERCIAL USE



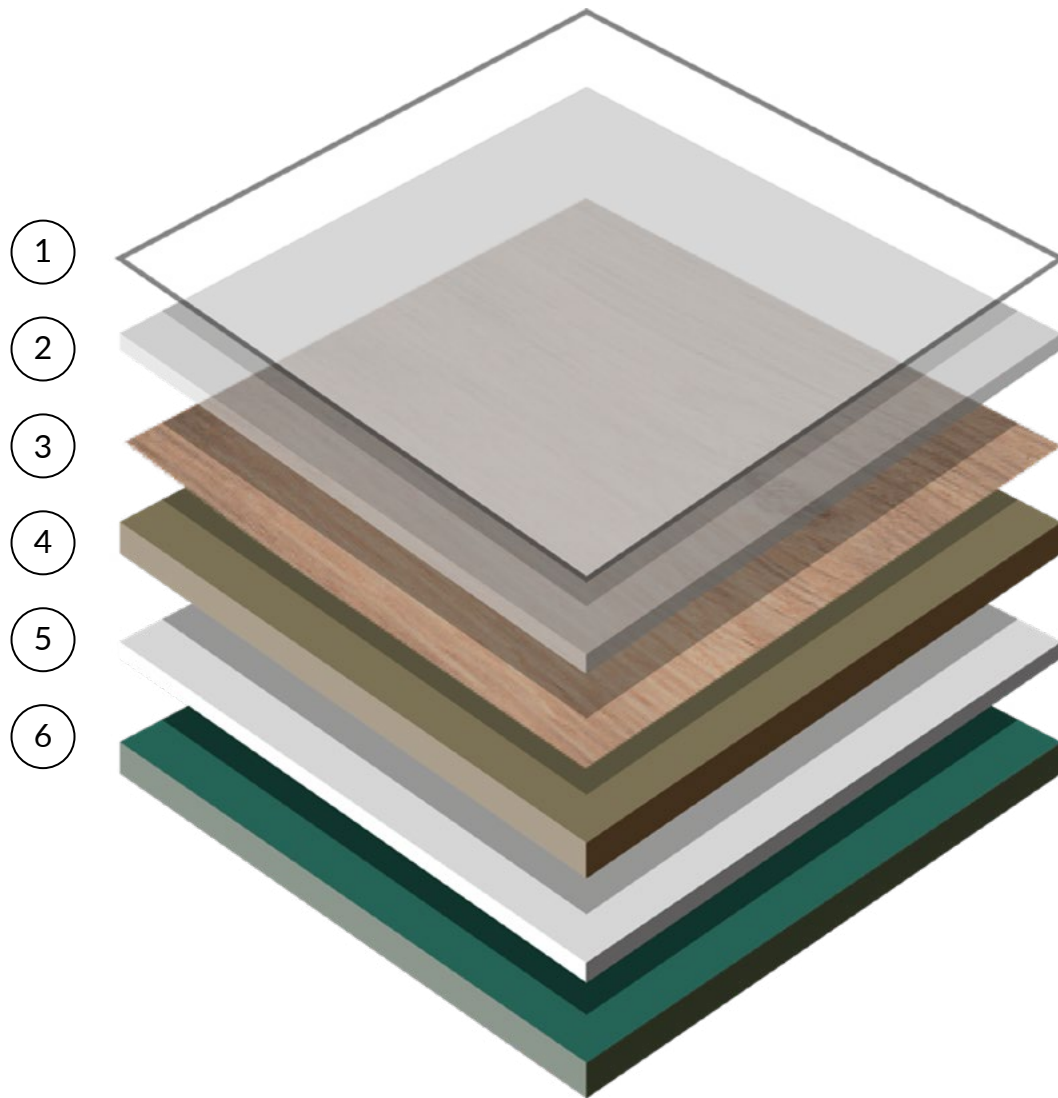
10 YEARS WARRANTY DOMESTIC USE

The Elegance Royale collection of luxury vinyl tiles has been developed to meet the highest technical specification of its type. Ideal for all areas of the home, the products ensure high performance and optimum style. Compared with many alternative flooring options, Elegance Royale will under normal conditions resist household stains, will not crack, chip or splinter. The manufacturers of Elegance Royale are confident that the high quality products will provide many years of valuable service. All products purchased from the range are guaranteed for 10 years in commercial interiors and 15 years in domestic interiors against normal wear and tear in the recommended environment, provided that they have been fitted correctly and maintained in accordance with the manufacturer's instructions. Full terms and conditions of the guarantee are available on request from your flooring provider.

www.eleganceroyale.co.uk

Structure

Gra-Matt Ultra Technology



- ① Polyurethane treatment PUR | **Easy maintenance**
- ② Wear layer 0.55 mm - Class 33/42 | **Heavy commercial**
- ③ Design | **Realistic Design & colours**
- ④⑤⑥ Calendered PVC | **Resistant to indentation**

Technical

CLASSIFICATION	STANDARDS	UNITS	RESULT
Product standard	EN ISO 10582		Heterogeneous PVC floor covering
Performance classification	EN ISO 10874	class	33-42
FEATURES	SHADES	QTY PER BOX	M2 PER BOX
Herringbone plank sizes	8	48	3.01
	STANDARDS	UNITS	RESULT
Herringbone plank format	EN ISO 24342	mm	613.5 x 102.25
Total thickness	EN ISO 24346	mm	2.5
Wear layer thickness	EN ISO 24340	mm	0.55
Surface treatment	Polyurethane PU Antique Wood Texture, Super Protect, Super Matt		
Abrasion group	EN 660-2	group	T
Binding agent content	EN ISO 10582	type	I
Total weight	EN ISO 23997	g/m ²	8 100
PERFORMANCE	STANDARDS	UNITS	RESULT
Dimensional stability to heat	EN ISO 23999	%	< 0,10
Reaction to fire	IN 13501-1	class	Bfl-s1
Acoustic efficiency (shock noise: Lw)	EN ISO 717-2	dB	7
Residual static punch	EN ISO 24343-1	mm	< 0,10
Resistance to wheeled chair	ISO 4918	cycles	25,000 (no damage)
Slip resistance	DIN 51130	group	R9
Slip (coef.)	IN 13893	class	DS (0.30°)
Colour strength in light	EN ISO 105-B02	degree	> 6
Chemical resistance	EN ISO 26987		Good
Thermal resistance	IN 12667	m ² . K/W	0,017
Underfloor heating			Heating floor compatible (max 27°C)
Electrical behaviour	IN 1815	kV	- 0.6 (antistatic)
ENVIRONMENT	STANDARDS	UNITS	RESULT
Air emissions: 28-day TVOC	IN 16516	µg/m ³	< 100 (Class A+)
Formaldehyde at 28 days	EN 717-1		E1 (not detected)
REACH (European regulation)	1907/2006/EC		Conform
DESCRIPTION			
Instructions for use	Elegance Royale Herringbone is suited to commercial areas within the retail, leisure, office, education and healthcare sectors, plus any domestic situation. Temperatures in conservatories can become quite high. It is strongly advised that, in such situations, we recommended high temperature adhesive is used.		
Guarantee	15 years domestic guarantee 10 year commercial guarantee (subject to conditions).		



Elegance
Royale ⁵⁵
 COLLECTION
DRYBACK LVT

FOR THE PERFECT FLOOR, YOU NEED THE PERFECT SUBFLOOR

STS Flooring luxury vinyl flooring collection is as beautiful as it is practical and, in partnership with **ARDEX**, we have produced this installation guide to assist you with the correct substrate preparation that will help to ensure this stunning collection of wood, stone and industrial designs get the perfect installation every time.



STS FLOORING LUXURY VINYL TILE COLLECTION

LIBERTY FLOOR SOLUTIONS
Rock 40
RIGID ACOUSTIC CLICK LVT

LIBERTY FLOOR SOLUTIONS
Urban 40
DRYBACK LVT

LIBERTY FLOOR SOLUTIONS
Urban 55
DRYBACK LVT

Philadelphia Available in Rock 40 & Urban 40 Plank format

Subfloor Systems with a 10 Year Guarantee

NEW BUILD

We have two system recommendations for new build installations.

Damp Floor: If your floor has RH readings above 75% and below 95%, with a functioning structural damp proof membrane present, we recommend the use of ARDEX MVS 95.

Dry Floor: If your floor has RH readings below 75%, we recommend the use of ARDEX P 51 Primer.

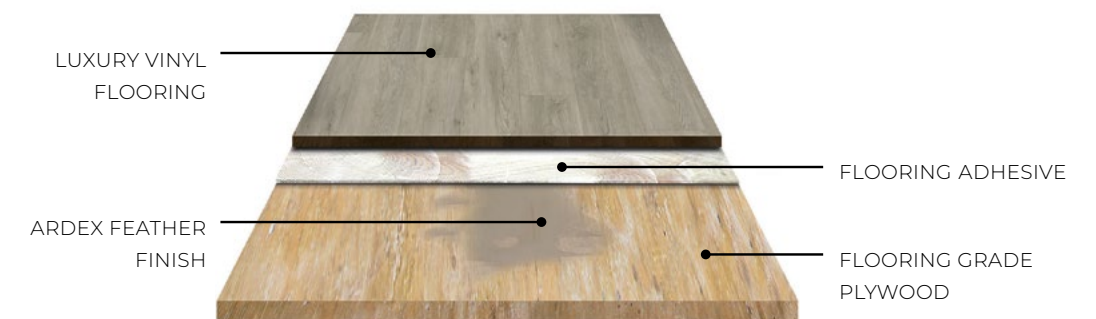
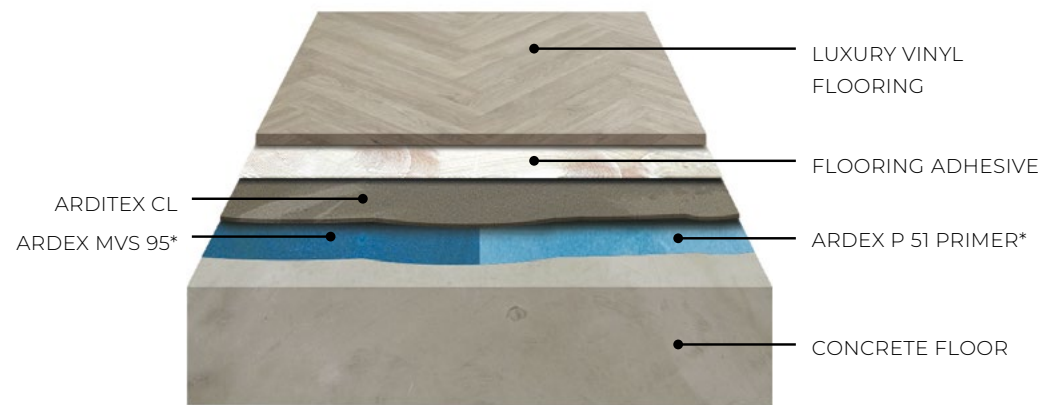
Saxon Oak - Available in Plank and Herringbone Format

FLOORING GRADE PLYWOOD

If you are installing luxury vinyl flooring over a suitable flooring grade plywood, ARDEX Feather Finish allows you to rapidly skim the plywood, and smooth between staggered sheets.

ARDEX Feather Finish dries in as little as 15 minutes, ensuring a fast track luxury vinyl flooring installation.

Saxon Oak - Available in Plank and Herringbone Format



* Product selection will depend on the RH readings of the floor.



HIGH SOLAR GAIN

If you are installing luxury vinyl flooring in areas of direct sunlight, such as conservatories and extensions, ARDEX AF 2575 PLUS One Component Heavy Duty Adhesive is part of the ideal system.

Empire Oak Available in Plank and Herringbone Format



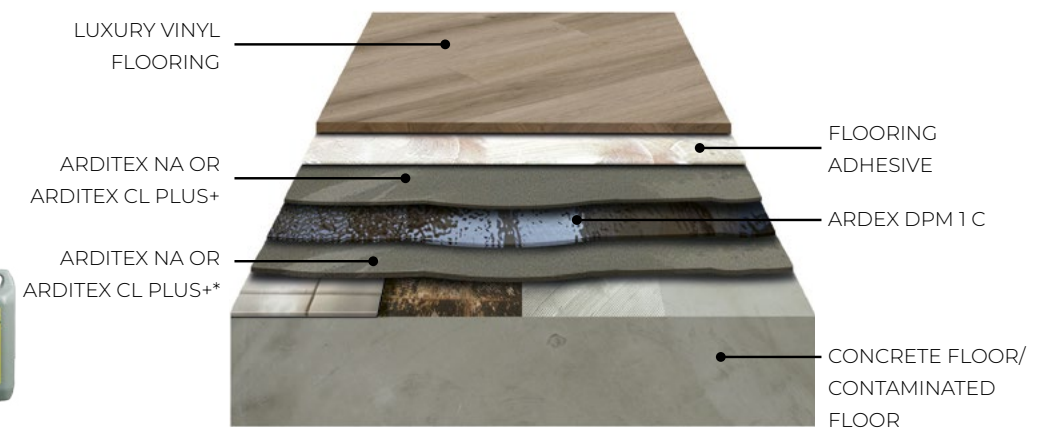
REFURBISHMENT

Our refurbishment system is ideal for older properties with damp or contaminated floors. This system reduces the need for intensive preparation and priming.

Kingship Oak Available in Plank and Herringbone Format



* Product selection will depend on the RH readings of the floor.



* An optional pre-smoothing layer of ARDEX NA or ARDEX CL PLUS+ can be applied prior to the installation of an ARDEX DPM to ensure it is applied in a cost effective, optimal layer.

If pre-smoothing is required, please ensure you use the **same** product for both layers either side of the ARDEX DPM i.e. both must be ARDEX NA or both must be ARDEX CL PLUS+.

LEVELLING COMPOUNDS & REPAIR MORTARS

MOISTURE CONTROL, PRIMING & FLOORING ADHESIVES



The Original Yellow Bag®

ARDITEX NA

Ultra Rapid Setting Latex Levelling & Smoothing Compound

- Excellent adhesion to almost all substrates without priming, including flooring grade plywood
- Unaffected by moisture, can be used under an ARDEX Damp Proof Membrane and direct to damp concrete
- Install floorcoverings in as little as 4 hours

Pack size: 20kg Powder & 4.95kg Latex · Coverage: Approximately 5m² at 3mm



ARDITEX CL PLUS+

Fibre-Reinforced Moisture-Tolerant Levelling & Smoothing Compound

- Apply direct to most substrates without priming, including old adhesive residues and bitumen
- Unaffected by moisture and can be used direct to damp concrete
- Fibre-reinforced for extra strength and flexibility
- Walk on after 2 hours and install floorcoverings in as little as 8 hours

Pack size: 20kg Powder & 4.8kg Latex · Coverage: Approximately 4m² at 3mm



ARDITEX CL

Two-Part Latex Levelling & Smoothing Compound

- For smoothing and levelling most common internal subfloors such as concrete, cement/sand and Gypsum (anhydrite) screeds
- Excellent flow and application properties
- Receive light foot traffic in as little as 2 hours and install most floorcoverings after 12 hours

Pack size: 20kg Powder & 4.5kg Latex · Coverage: Approximately 4m² at 3mm



ARDEX Feather Finish

Rapid Drying Patching & Smoothing Compound

- For patching and smoothing minor surface damage to levelling and smoothing compounds
- Ideal for skimming flooring grade plywood
- Floorcoverings can be installed in as little as 15 minutes
- No priming required

Pack size: 5kg/11kg · Coverage: Approximately 50m² at 1mm



ARDEX P 51 Primer

Concentrated Water-Based Primer & Bonding Agent

- For use on dry floors prior to the application of a water-based levelling compound
- Minimises air bubbles rising through levelling compounds and porous surfaces
- Easy to use, dilute as appropriate for the application

Pack size: 1kg/5kg/25kg · Coverage: Up to 160m² from 5kg



ARDEX MVS 95

One Component Residual Moisture Vapour Suppressant

- Protects the final floorcovering from residual construction moisture
- Can be used where a structural DPM is present (with Hygrometer readings above 75% and below 95% RH)
- Fast drying - apply smoothing compounds after 2 hours

Pack size: 12kg · Coverage: Up to 32m² (two coats)



ARDEX DPM 1 C

One Coat Surface Damp Proof Membrane

- Protects the floorcovering from residual construction moisture and rising damp
- Can be used where a structural DPM is not present or is ineffective
- Accommodates up to 98% RH on most subfloors

Pack size: 6kg/10kg/25kg · Coverage: 10kg unit up to 25m²



ARDEX AF 175

Luxury Vinyl Tile Adhesive

- Fibre-reinforced to minimise lateral movement and adhesive squeeze between tiles and planks during installation
- Install tiles and planks after 5 minutes
- Walk on after 2 hours

Pack size: 6kg / 12kg · Coverage: Up to 48m²



ARDEX AF 145

Pressure Sensitive Vinyl Adhesive

- Ready to receive floorcoverings in as little as 20 minutes
- Excellent early and long term adhesive strength
- Can be used as a pressure sensitive adhesive or wet bond adhesive

Pack size: 6kg / 12kg · Coverage: Up to 48m²



ARDEX AF 2575 PLUS

One Component Heavy Duty Adhesive

- Zero waste, ready mixed and resealable
- Moisture, weather and water resistant
- High temperature resistance, ideal for use in areas of direct sunlight e.g. conservatories, and with underfloor heating systems

Pack size: 7kg · Coverage: Up to 23m²



